

# Apex 2110VI Exit Device With Intruder Function Indicators



## Heavy-duty performance with unique visual indicators.

Designed for high occupancy rooms such as libraries, cafeterias, auditoriums, science and technology classrooms, the Precision 2110VI exit device provides code compliant safe egress with fast and efficient security lockdown.

The 2110VI incorporates the ANSI "10" function, also referred to as the "Intruder Function" with Lock/Unlock status and Directional Indicator. This exit device delivers functionality for increased safety and security. The visual-friendly lock/unlock status indicator is integrated into the housing and contains bright reflective material that may be seen in low light conditions. It boasts an embossed directional indicator that offers quarter-turn (90°) activation to enable faster lock down.

The 2110VI is available in a variety of finishes including 630 Satin Stainless Steel and 630AM Satin Stainless Steel with UltraShield™ Antimicrobial Coating.



The 2110VI can be ordered new as a complete exit device or as a field conversion kit pending the respective application. See chart on the following page.

Features	Benefits
Integrated Visual Lock/Unlock Indicator	Resistant to High Traffic & Abuse
Low Light Color-Coded Reflective Security Indicator	Enables Easy to Read Security Status in Low Light Facility Lock Down Protocols
Embossed Directional Indicator	Visual Friendly Lock/Unlock Directional Indicator - Weatherproof, No Peeling Labels
Quarter-Turn Lock Down Activation	Fast & Efficient Security Lock Down Requiring Limited Key or Thumbturn Rotation
Field Conversion Kits	Enables Field Conversion of Existing 2108 or 2110 Precision Apex Exit Devices To Include Visual Indicators

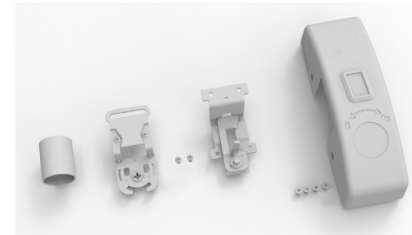
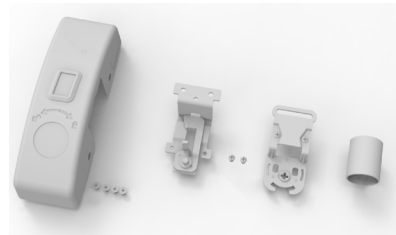
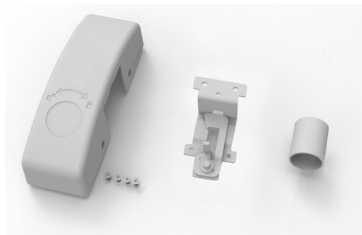
### How To Order - New Rim Exit Device

**3R0 2110VI X V4908A RHRB 630 3'0" x 1-3/4"**

Available Finishes: 605, 606, 612, 613, 622, 625, 626W, 628, 630, 630AM, 690  
 Lever trim vandal resistant - V4908A or 4908A (lever style is A, B, C, D (or decorative optional))  
 10VI - Intruder function with visual lock/unlock & directional indicator (available on rim only)  
 10 - Intruder function with directional indicator

10/Intruder function description - Interior Key or Thumb-turn Locks/Unlocks outside lever trim. Lever trim key retracts latch (rim cylinder or thumb turn sold separately)

### How to order - New Precision Apex 2000 Rim Intruder Function Conversion Kit



2110 Conversion Kit	New 2110VI Conversion Kit	New FL-2110VI Conversion Kit
<p>Kit Nomenclature RDC-10 Converts from 2108 to 2110 without lock/unlock indicator</p> <p><u>Parts Included</u></p> <ul style="list-style-type: none"> <li>Cover without lock/unlock window</li> <li>Cylinder mounting bracket</li> <li>Locking arm assembly</li> <li>Cylinder sleeve</li> </ul>	<p>Kit Nomenclature RDC-10VI Converts from 2108 to 2110VI with lock/unlock indicator</p> <p><u>Parts Included</u></p> <ul style="list-style-type: none"> <li>Cover with lock/unlock window</li> <li>Cylinder mounting bracket with flag assembly</li> <li>Locking arm assembly</li> <li>Cylinder sleeve</li> </ul>	<p>Kit Nomenclature FRDC-10VI Converts from FL2108 to FL2110VI with lock/unlock indicator</p> <p><u>Parts Included</u></p> <ul style="list-style-type: none"> <li>Cover with lock/unlock window</li> <li>Cylinder mounting bracket with flag assembly</li> <li>Locking arm assembly</li> <li>Cylinder sleeve</li> </ul>

**When Ordering Conversion Kits, Specify handing (RHRB or LHRB), finish rated or non-fire rated**

Available Product Finishes		
1	605	Bright Brass
2	606	Satin Brass
3	612	Satin Bronze
4	613	Antique Bronze
5	622	Powder Coat Black
6	625	Bright Chrome
7	626W	Weatherized Satin Chrome
8	628	Anodized Aluminum
9	630	Satin Stainless Steel
10	630AM	Satin Stainless Steel with Ultra Shield Antimicrobial Coating
11	690	Power Coat Dark Bronze

### Available Exit Trims 4900 Series

